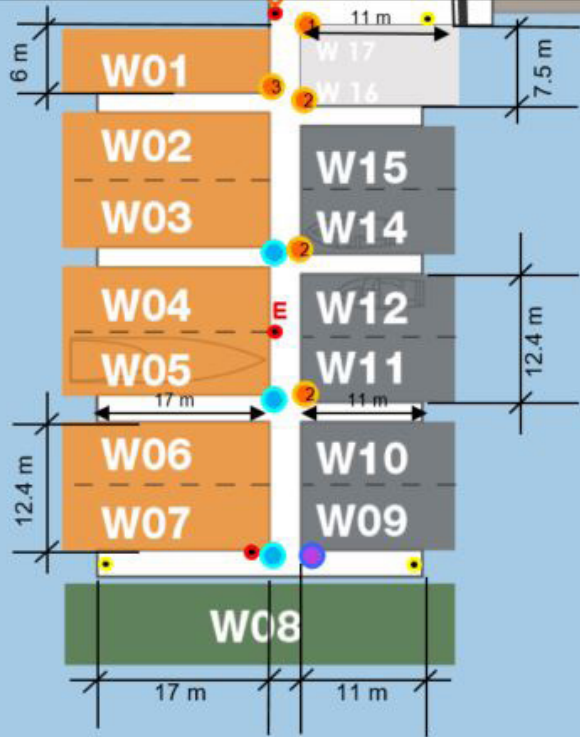


# Melbourne City Marina

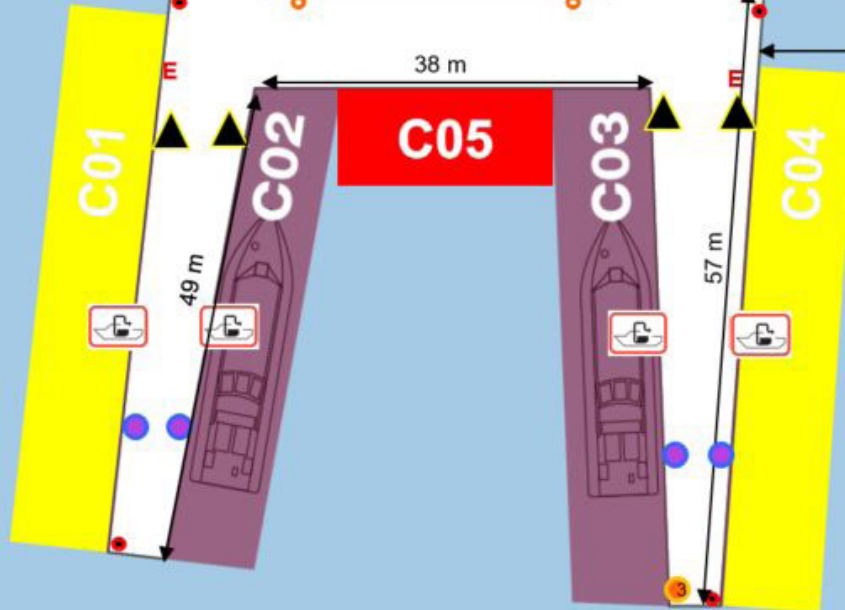


\* Not to Scale

Summer season  
Weekend marina office



West Pontoon



East Pontoon

## Vessel Lengths

- 60m/197ft Berth
- 57m/187ft Berth
- 50m/165ft Berth
- 40m/132ft Berth
- 30m/100ft Berth
- 20m/66ft Berth
- 15m/50ft Berth
- 10m/33ft Berth

- 2 x 15amp
- 2x 15amp
- 2x 15amp
- 2x 3 phase 32 amp
- 1x 3 phase 32 amp
- Service pedestal – Light Only
- 2x 15amp
- Life Buoy
- 1 x 3 phase 32 amp
- Fire Hose
- 1 x 63 amp / 415v
- Fire Extinguisher
- 2x 15amp
- Sewerage pump out station
- 1 x 3 phase 32 amp
- Gate
- 1 x 63 amp / 415v
- 1 x 120 amp/415v