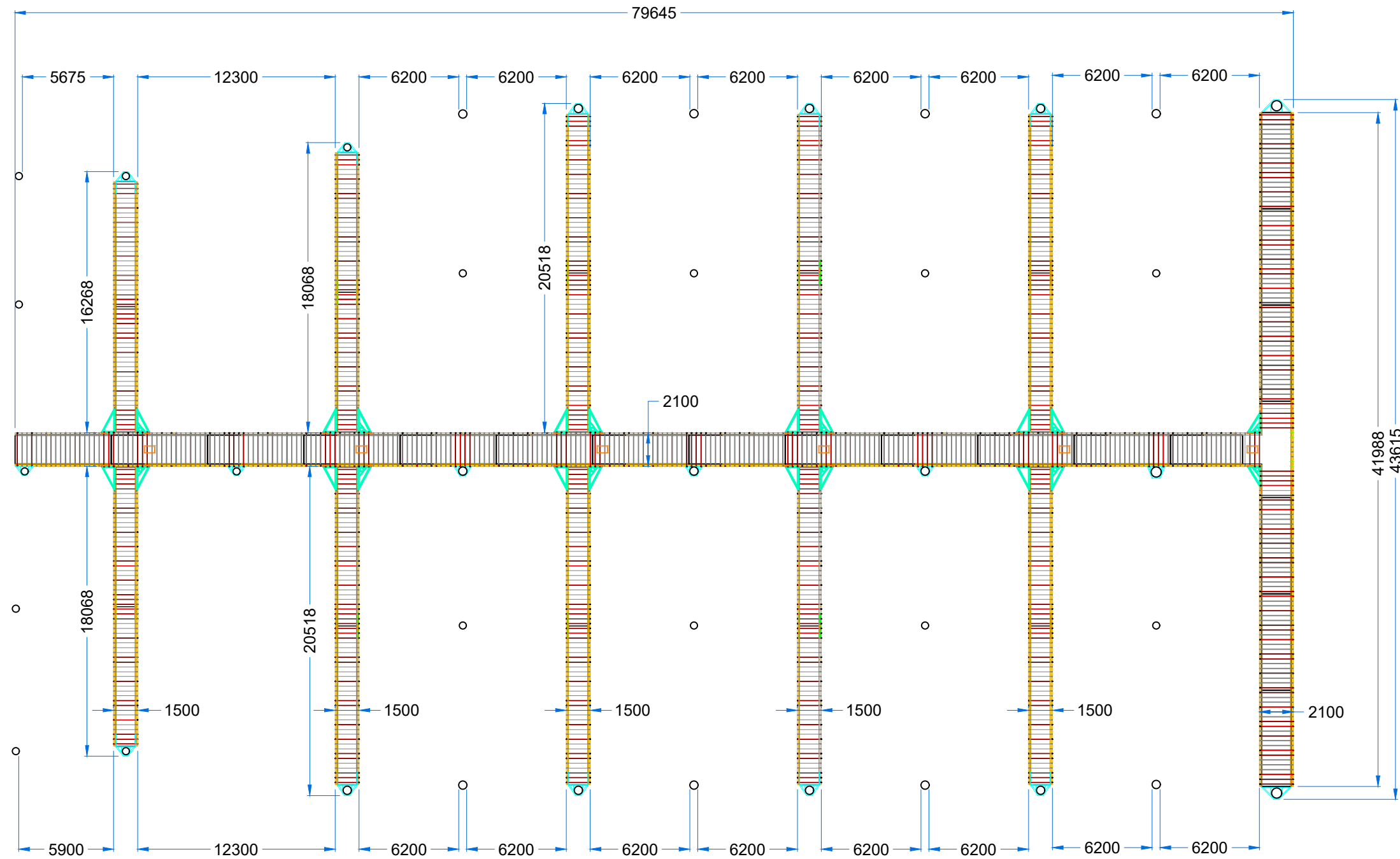


Pier B



SHOREWISE
ENGINEERING CONSULTANTS

This drawing is in accordance with our calculations where applicable.

R. Brown

Rob Brown
Chartered Professional Engineer
CPEng # 1024046

Rev	Date	Description	Checked	Approved
1	8/04/2021	ISSUED FOR QUOTATION	CC	CC
2	21/04/2021	PILE SPECS UPDATED	CC	BS
3	29/06/2021	REMOVED PILES 8,9,11,12 CHANGED PILES 6,7,13,14	CC	BS
4	1/07/2021	CHANGED T-HEAD PILES TO 610, WALKWAY PILES SWAPED SIDES	CC	BS

0404-Port Nikau stage 2

General Tolerance
0. = +/- 1.0mm
0.0 = +/- 0.5mm
0.00 = +/- 0.1mm

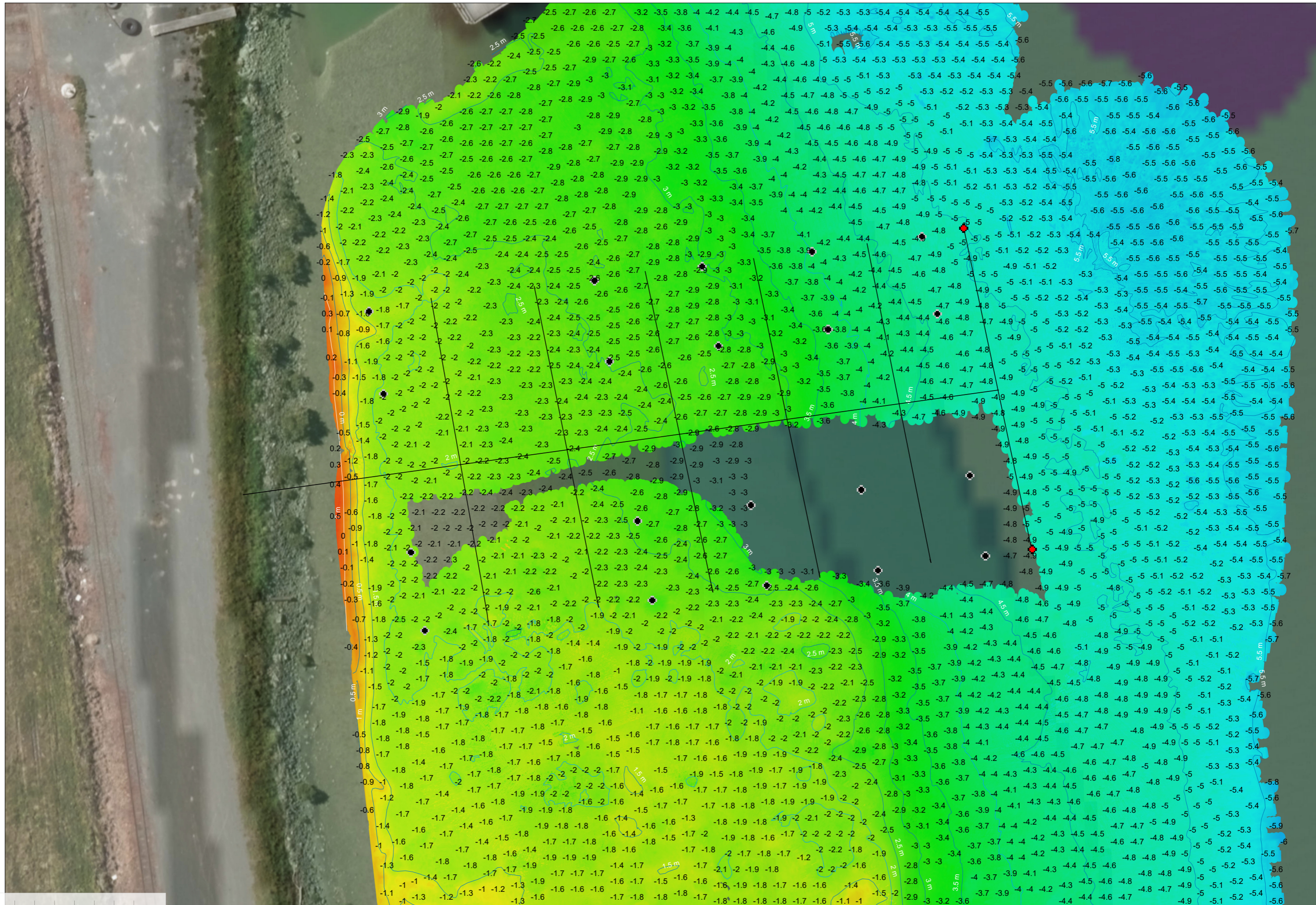
Client: PN
Scale: 1:300
Drawn by: CRAIG CAVE



General Arrangement

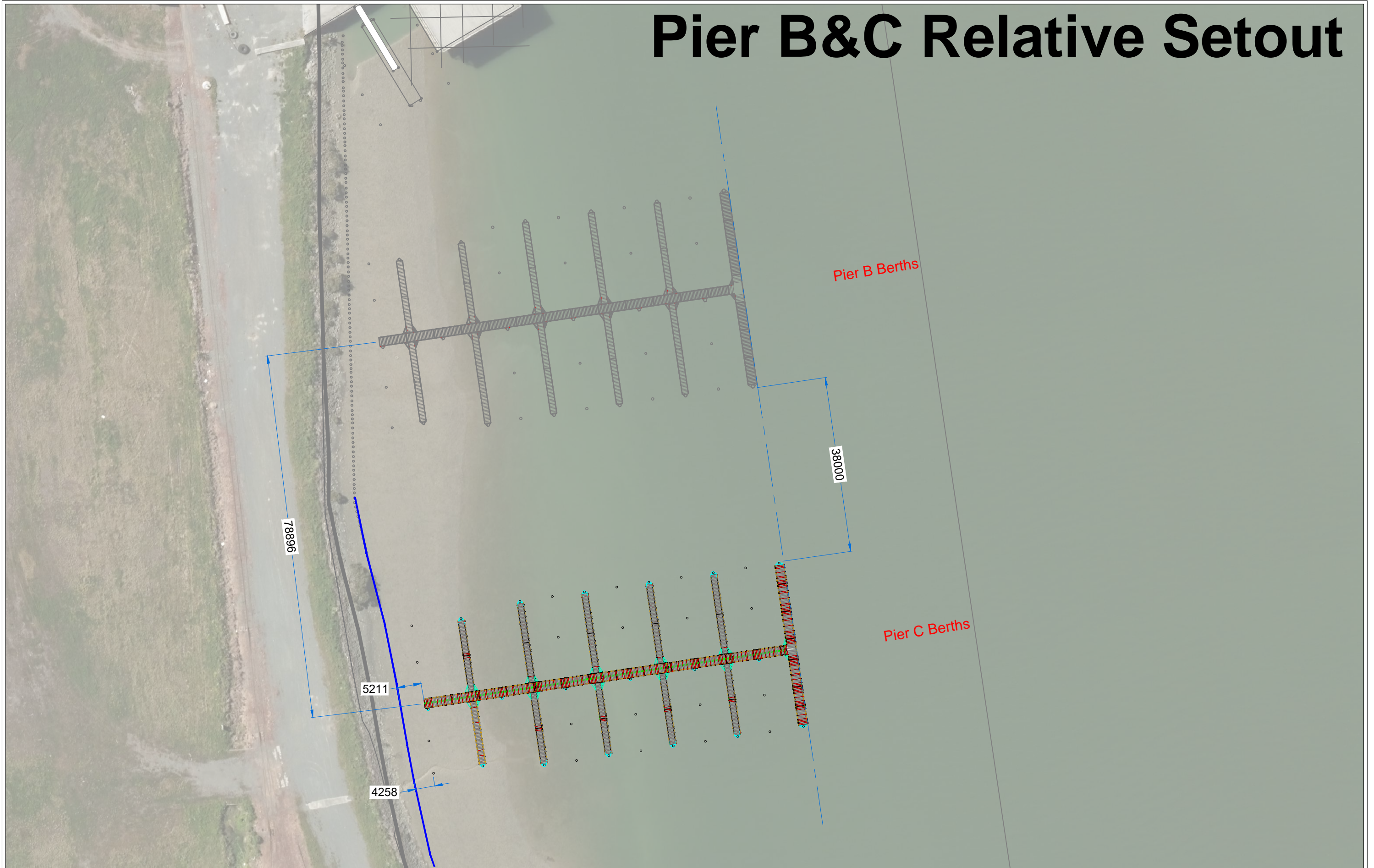
Drawing No: 0404-0200-0002
Type: GENERAL ARRANGEMENT

New Marina Footprint September 2022



Seabed Depths below Chard Datum

Pier B&C Relative Setout



Rev	Date	Description	Checked	Approved
1	22/03/2023	ISSUED FOR QUOTATION	CC	CC
2	23/03/2023	INCREASED LENGTH OF 1ST WALKWAY PONTOON	CC	CC

91Port Nikau C pier
 General Tolerance
 0. = +/- 1.0mm
 0.0 = +/- 0.5mm
 0.00= +/- 0.1mm
 Client: _____
 Scale: 1:750
 Drawn by: CRAIG CAVE



Relative Position
 Drawing No: 0491-0000-0002

© All designs and calculations contained in this plan are the sole and wholly owned intellectual property of Total Marine Services Ltd, New Zealand.